

Lyric by **RALPH BLANE**

Music by **HARRY WARREN**

THE STANLEY STEAMER



M.G.-M. presents

Summer Holiday

Starring

Mickey **ROONEY** · Gloria **DEHAVEN**

Walter **HUSTON** · Frank **MORGAN** · Butch **JENKINS**

Marilyn **MAXWELL** · Agnes **MOOREHEAD** · SELMA ROYLE

in **TECHNICOLOR**

ADAPTED BY IRVING MARCHER AND JACK HOLMES · BASED UPON THE SCREEN PLAY BY FRANKLIN JOHNSON AND ALBERT HACKETT · BASED ON THE PLAY "THE UNDISCOVERED" BY GEORGE BERNARD SHAW

DIRECTED BY ROUBEN MAMOULIAN

PRODUCED BY ARTHUR FREED

A METRO-GOLDWYN PICTURES PRESENTATION

Harry Warren MUSIC BY

TELE BROADCAST · NEW YORK

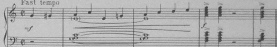
THE STANLEY STEAMER
WHEELS TO FULL IN LOVE
BARKER KAPLAN'S HIGH
ROMANCE OF THE
THE STANLEY STEAMER

THE STANLEY STEAMER

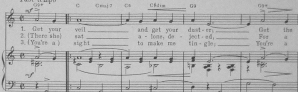
Lyrics by
RALPH BLANE

Music by
HARRY WARREN

Fast tempo



Fast tempo



C Am7 Dm7 G7

out in your Stan - ley Steam - er. In a
man in a Stan - ley Steam - er. It was
out in your Stan - ley Steam - er. I you

C Gmaj7 Cs C#dim G#m

gals we nev - er dis - tar, Cause we're
not that she was sta - pid, Not the
find you're not in - ven - tive, Then I'll

Em7 C Gmaj7 A C#dim D#m

told we get that old fa - mil - lar lan - tern, If you're
shed she thought she got from Mis - tar Cu - pid, It be -
but you're gon - na get a new in - ven - tion, And you'll

Cs F#m F#m

dressed in style Ev - 'ry - one will smile When you're
gan to rain Then a - long the lane Came the
lose your heart On the day you start Go - by

C Dm7 G# C Am7 D7

out in your Stan - ley Steam - er.
 sea in the Stan - ley Steam - er.
 out in your Stan - ley Steam - er.

Em Cmaj7 Em7 Cmaj3 G7-9

Honk! Honk! Honk! Honk! Honk! The
 Chug! Chug! Chug! Chug! Chug! A
 Honk! Honk! Honk! Honk! Honk! The

Em F#m7 D7 Em Em7 G7-9

don - key used to have his chain, But he's
 lug was final - ly here at last, She for -
 too - don like has had its day, If you're

Em F#m7 D7 Em D#7 Gm7

look - ing at us with a - larm, For it
 got the sky was o - ver - cast, And what
 rid - ing one you'll find that they Poke a -

looks like he's back to the farm. But if you fail
 happened to part of her past. But she vowed
 long in an ob-so-lete way. We're full of bright

— with your con-duc-tor, Then your speed is gun-na need a new ad-
 — that she was ner-vous, So the crowd was not al-lowed to see the
 — an-tic-i-pa-tion, Like a child who has a wild im-ag-i-

just-er, And you must be just Just the one we trust,
 ser-vice, Now they both are hitched, And she's glad she switched
 as-tions, And we wan-na ride, Wan-na ride in-side

Or we won't step in-side No, we won't take the ride That you
 From a thing she used to like. A do-flat-ed tan-dem bike, To the
 Of the lat-est mo-tor deal, Wan-na sit be-hind the wheel With the

(with smaller notes and)

C Am7 G D#

plan in your Stan-ley Steam-er, That you
man in the Stan-ley Steam-er, To the
man in the Stan-ley Steam-er, With the

Dm7 Fm#7 G7 Am A#7 C

plan in your Stan-ley Steam-er, In your Stan-ley Steam-er
man in the Stan-ley Steam-er, In the Stan-ley Steam-er
man in the Stan-ley Steam-er, In the Stan-ley Steam-er

1-2 Dm7 Dm7 G7 G7 G#7 3. Dm7 Dm7

an-to-mo-bile, 2. There she an-to-
an-to-mo-bile, 3. You're a

Silenc Dm7 Silenc G7

mo-bile